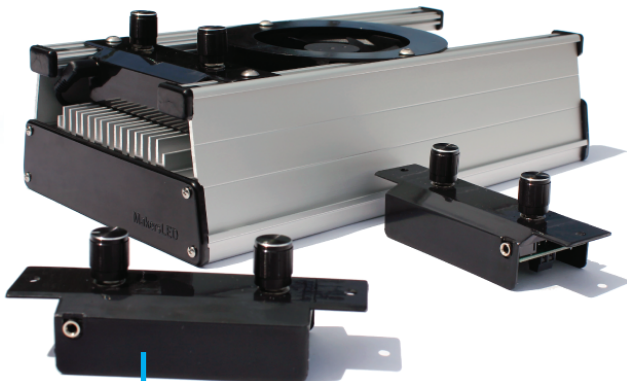


LDD-H Series with Through-hole mounting

MakersDRIVERTM 2UP PRO
drives your LEDs



Drives up to 28 LEDs (14 LEDs/channel), a fan, and an optional controller

The MakersDRIVER 2UP PRO takes building finished DIY LED fixtures to a new level by simplifying power connections and providing multiple options for dimming control.

The MakersDRIVER 2UP PRO utilizes an inexpensive 48V DC power source (sold separately) to drive up to 28 LEDs, a fan, and an optional controller. It provides 2 dimming channels, each capable of driving 14 LEDs. The MakersDRIVER 2UP PRO incorporates user-replaceable Meanwell LDD series LED drivers (Sold Seperate). Dimming options include integrated knobs, 0-10V input, and a serial data interface.


Included:

- MakersDRIVER 2UP PRO, plastic housing, knobs
- Stainless docking hardware for the MakersLED heatsink



Required & Not Included: 2x Meanwell LDD-H Series with Through-hole mounting (up to 1000mA)

Features:

- Docks into the MakersLED Heatsink
- Drives up to 28 3v LEDs at 1000mA (45V available per channel)
- 2 channels of dimming (14 LEDs/channel)
- Manual dimming interface (via 2 knobs)
- Multiple external control options available:
 - Data interface with MakersCONTROLLER lighting controller (addressable to 4 channels)
 - Accepts 0-10V DC analog lighting control signal
 - Neptune Apex ready 
- Daisy chain multiple MakersDRIVERS for single point of control with timed dimming
- Powers one 12v Fan (no extra fan power supply needed!)
- Fan failure detection – Flashes LEDs to alert failure (if fan is detected upon start-up)
- Sockets provided for Meanwell LDD drivers allow for removal (upgrade and replacement)
- Your choice of 2 Meanwell LDD Drivers (300mA, 350mA, 500mA, 700mA, 1A)
- Utilizes inexpensive 48V DC power supplies (not Included)
- Fused electrical protection
- Docks into 1ft or greater MakersLED heatsinks with space for a fan
- 90 Day warranty*

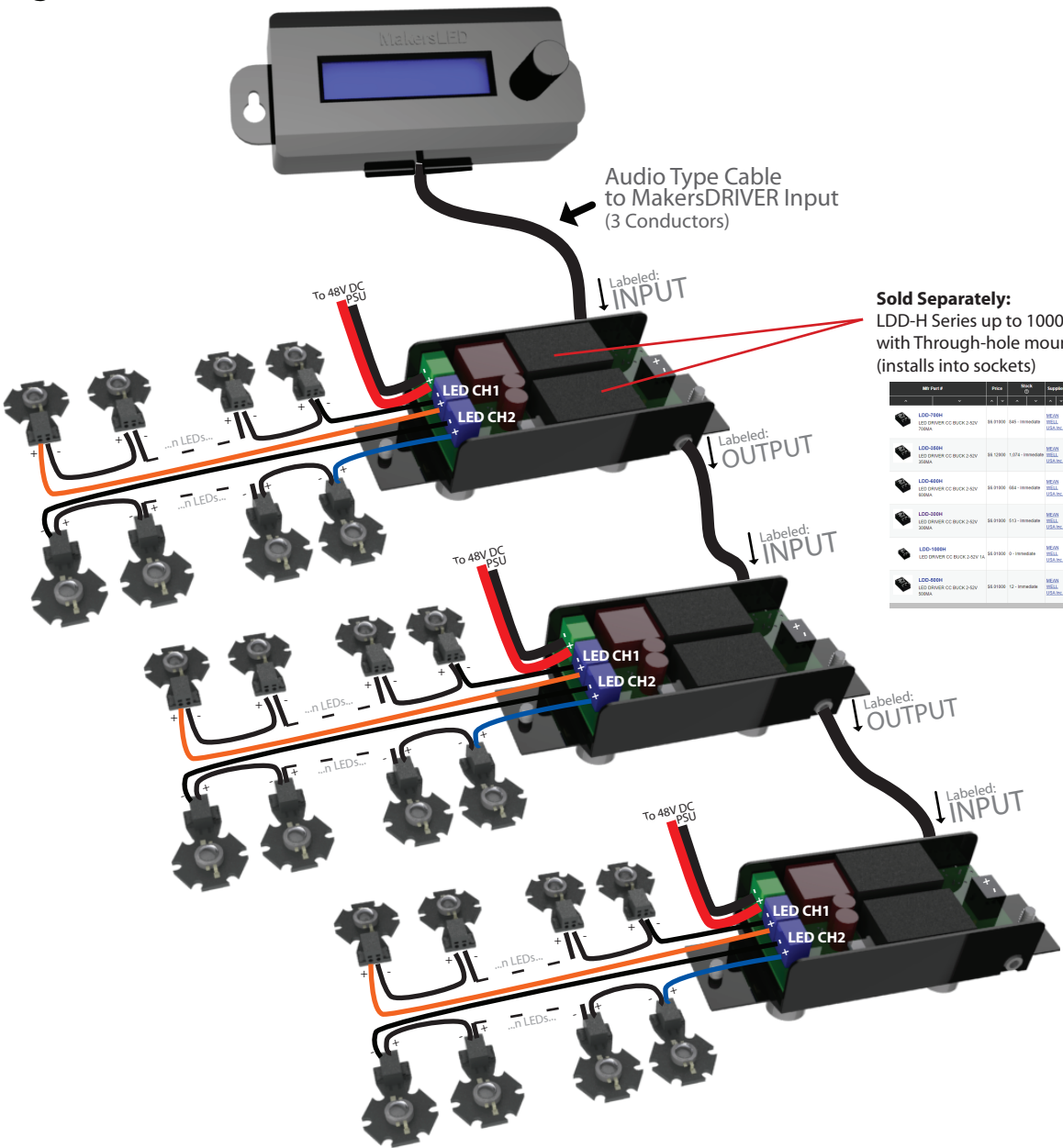
Digikey Part Numbers:
300mA: 1866-3103-ND
350mA: 1866-3107-ND
500mA: 1866-3111-ND
600mA: 1866-3115-ND
700mA: 1866-3119-ND
1000mA: 1866-3091-ND

Available at: www.digikey.com



© MakersLED | www.MakersLED.com
specifications are subject to change without notice.

Typical Usage:

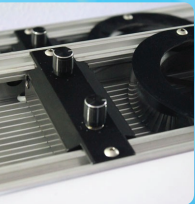
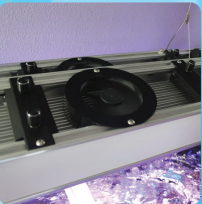
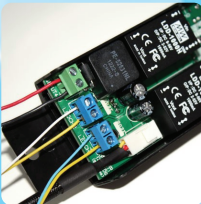


Sold Separately:
LDD-H Series up to 1000mA
with Through-hole mounting
(installs into sockets)

Part #	Power	Temp	Supply	Watt	Max Qty	Unit Price	Series
LDD-1000H	LED DRIVER CC-BUCK 2-10V 1000mA	50-100°C	1-10V	10W	1	\$18.99	LDD-H
LDD-700H	LED DRIVER CC-BUCK 2-10V 700mA	50-100°C	1-10V	7W	1	\$18.99	LDD-H
LDD-500H	LED DRIVER CC-BUCK 2-10V 500mA	50-100°C	1-10V	5W	1	\$18.99	LDD-H
LDD-350H	LED DRIVER CC-BUCK 2-10V 350mA	50-100°C	1-10V	3.5W	1	\$18.99	LDD-H
LDD-300H	LED DRIVER CC-BUCK 2-10V 300mA	50-100°C	1-10V	3W	1	\$18.99	LDD-H

*Warranty: 90 day limited warranty against defects in materials and workmanship. MakersLED LLC will determine the root cause of the defect, and your item may be repaired or replaced free of charge. Customers pay for shipping to our service location and we pay for the return shipment. Warranty does not cover failure caused by accident, misuse, abuse, alteration, or faulty installation.

Available at: www.digikey.com



© MakersLED | www.MakersLED.com
MakersDRIVER and MakersCONTROLLER are trademarks of MakersLED.
Specifications are subject to change without notice.