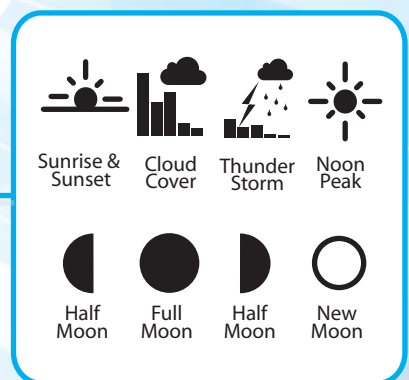
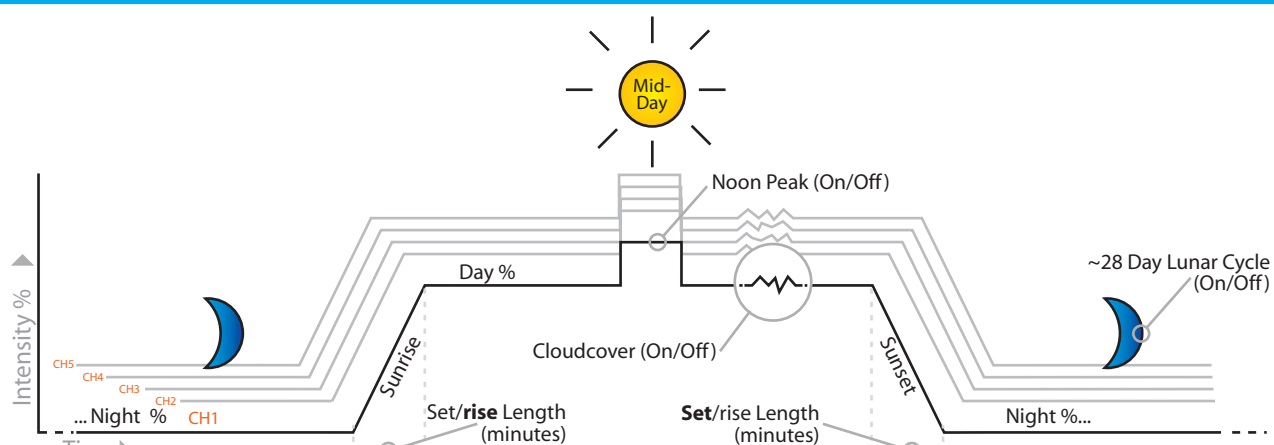


# MakersCONTROLLER™

controls your LEDs



The MakersCONTROLLER works in combination with the MakersDRIVER(s) to create sunrise, sunset and other special effects throughout the day.



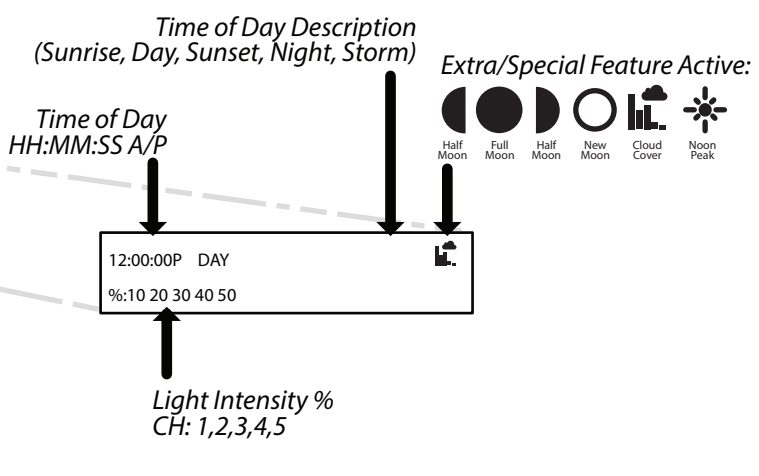
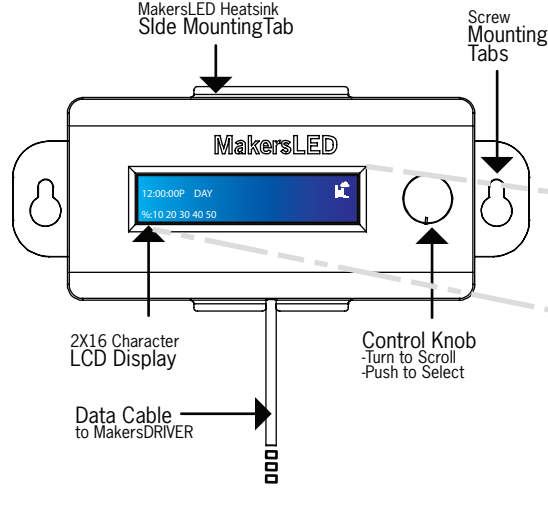
## Features:

- Works exclusively with the MakersLED MakersDRIVER PRO series
- Simulates sunrise, sunlight, sunset, and moonlight
- Up to 5 Channels of Independent Control
  - Up to 4 Channels when used with 2 MakersDRIVER 2UP Pro drivers
  - 5 Channels when used with the MakersDRIVER 5UP Pro
- Special effects include lunar cycle, noon peak, storms with lightning, and cloud cover
- Provides a single remote control point to a virtually unlimited number of MakersDRIVERS\*
- Demo/Preview mode provides a means to quickly scroll through every minute of the day
- Installation is as simple as plugging in a single cable into the MakersDRIVER
  - Powered from the MakersDRIVER - requires no external power source or additional cables
- Integrated clips to mount to the side of the MakersLED heatsink
- Integrated screw tabs for wall mounting and hanging
- Simple programming & menu structure

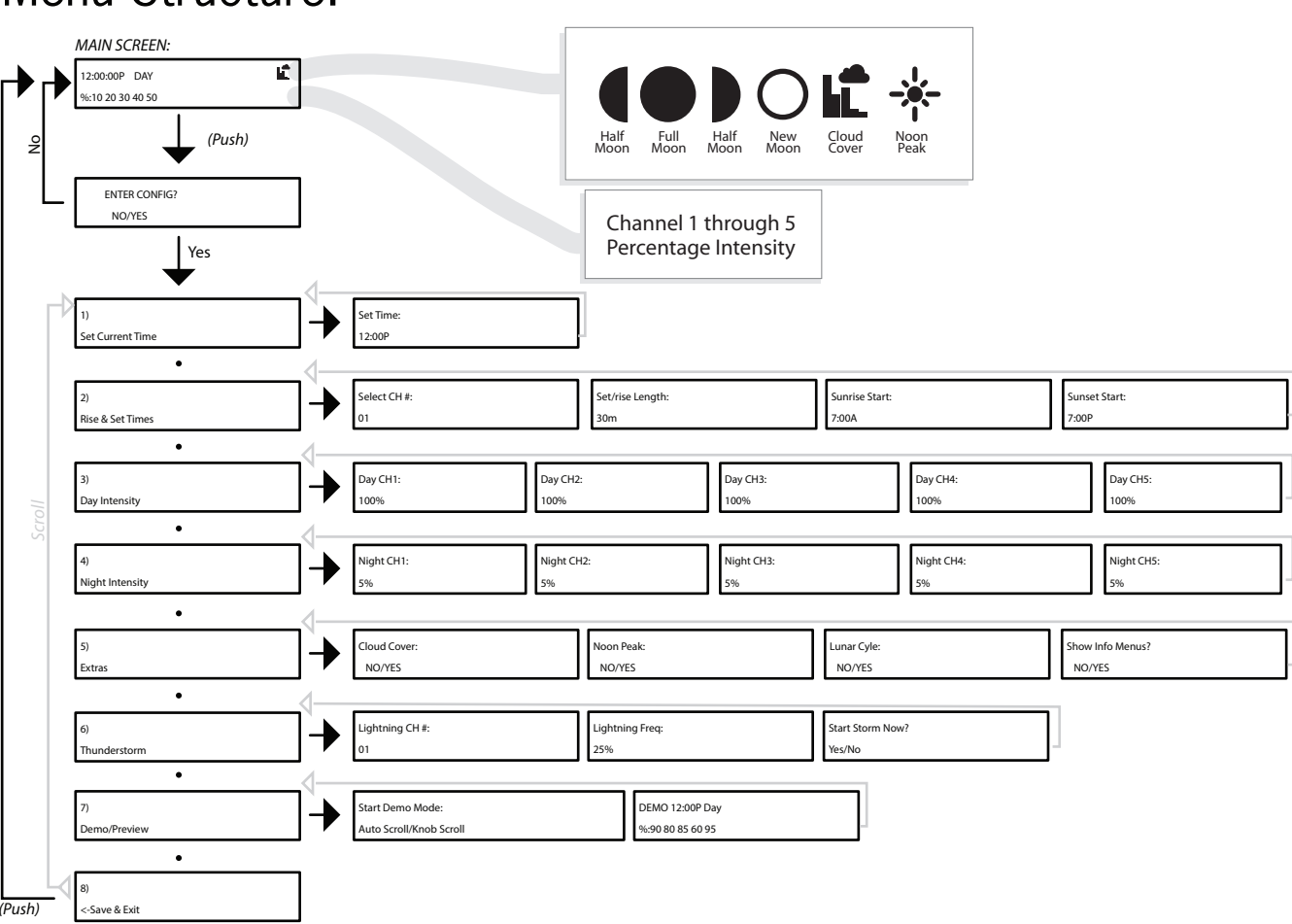
Available at: [www.digikey.com](http://www.digikey.com)



© MakersLED | [www.MakersLED.com](http://www.MakersLED.com)  
specifications are subject to change without notice.



## Menu Structure:



Included:  
One MakersCONTROLLER with integrated 10ft Cable  
Two 3.5mm 18in Data Cables (for daisy chaining multiple MakersDRIVERS)

Not Included:  
MakersDRIVER, Power Supply, Wall Mounting Hardware

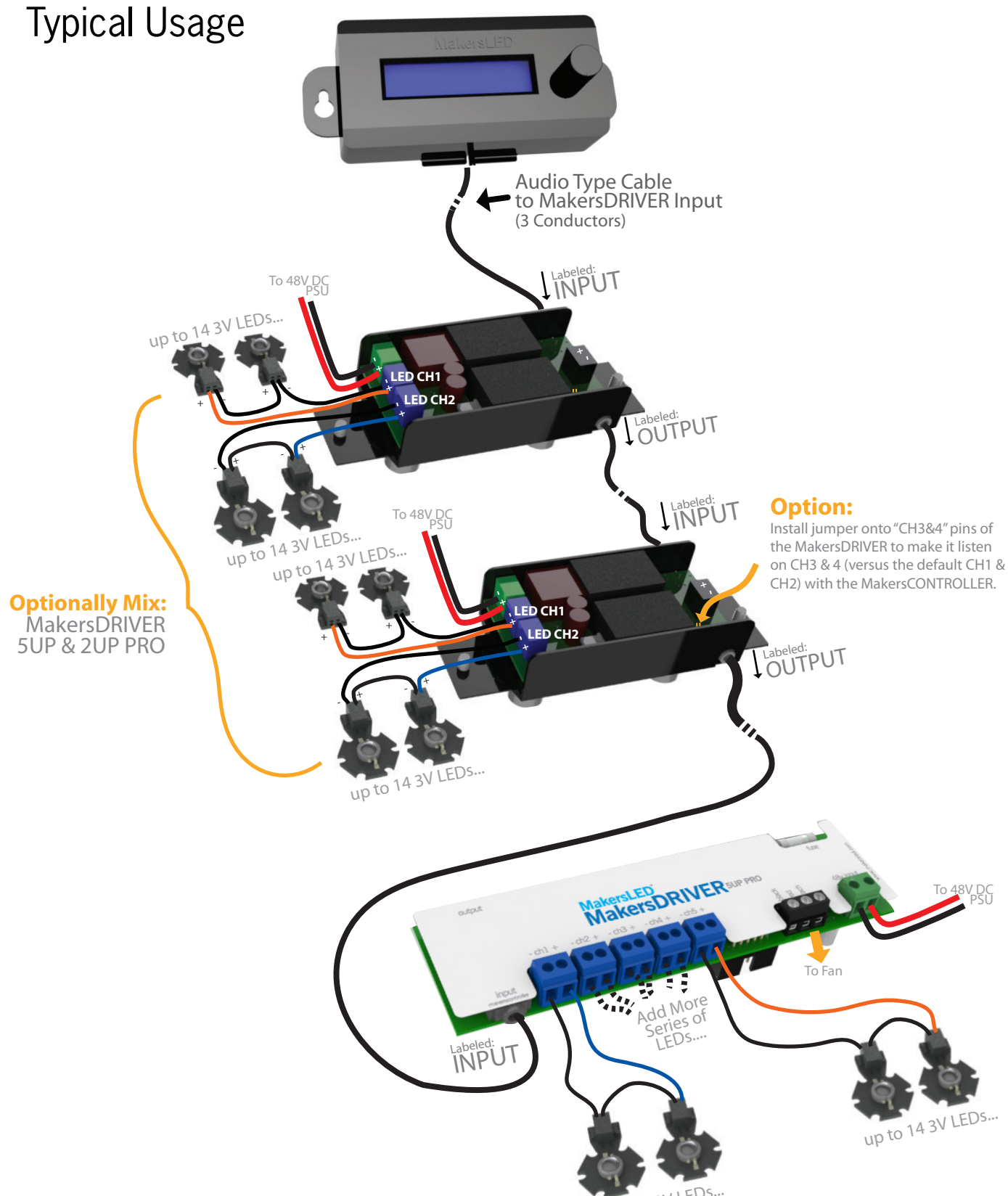
\*Each MakersDRIVER acts as an active signal repeater. The MakersCONTROLLER has been tested with 21 MakersDRIVERS using 1.5ft and 24ft cables cables.

Available at: [www.digikey.com](http://www.digikey.com)



© MakersLED | [www.MakersLED.com](http://www.MakersLED.com)  
specifications are subject to change without notice.

## Typical Usage



**Option:**  
Install jumper onto "CH3&4" pins of the MakersDRIVER to make it listen on CH3 & 4 (versus the default CH1 & CH2) with the MakersCONTROLLER.

Available at: [www.digikey.com](http://www.digikey.com)



© MakersLED | [www.MakersLED.com](http://www.MakersLED.com)  
MakersDRIVER and MakersCONTROLLER are trademarks of MakersLED.  
Specifications are subject to change without notice.